

DUO DRIVE

CEC VER.



Be Sure
to Read this
Manual
Before Use



Operation Manual

For Parts and Service, call Amusements Worldwide

www.amusementsworldwide.com

Tel: 214-750-9202

SERIAL NUMBER

DATE OF INSTALLATION

CONTENT

IMPORTANT SAFETY INSTRUCTIONS.....	2
1. SPECIFICATIONS.....	4
2. PACKAGE CONTENTS.....	5
3. PART NAME.....	6
4. SET UP & INSTALLATION.....	7
5. HOW TO PLAY.....	11
6. GAME OPTION.....	11
7. ERROR MESSAGE AND RECOVERY.....	14
8. MAINTENANCE & INSPECTION.....	17
9. OVERALL CONSTRUCTION.....	18

Non-technical personnel who do not have technical knowledge and Expertise should refrain from performing such work that this manual require or perform tasks which are not explained in this manual. Failing to comply can cause severe accidents such as electric shock or other serious injuries. All repairs must be performed to original manufacturer specifications.

WARNING: To reduce the risk of fire, electric shock or personal injury, unplug or disconnect the machine from the power supply before servicing.

Thank you for purchasing **DUO DRIVE**. We hope you enjoy the product.

This manual contains valuable information about how to operate and maintain your game machine properly and safely. It is intended for the owner and/or personnel in charge of product operation. Carefully read and understand the instructions.

If you need any help during installation and setup please utilize this manual and troubleshooting guide. If the product fails to function properly, *non-technical personnel should under no circumstance attempt to service the machine*. Contact your distributor or manufacturer for help.

Before use, please read **IMPORTANT SAFETY INSTRUCTIONS**.

IMPORTANT SAFETY INSTRUCTIONS

To ensure the safe usage of this product, carefully read and understand these instructions before operating your game.

Save these instructions for future reference.

Use this product only as described in this manual. Other uses not recommended may cause fire, electric shock or personal injury. Unplug the game from the outlet when not in use, when moving from one location to another, and before cleaning/servicing.

Explanations which require special attention are indicated by signs of warning. Depending on the potential hazardous degree, the terms: **NOTE**, **NOTICE**, and **WARNING** are used.

NOTE: A NOTE indicates useful hints or information about product usage.

NOTICE: A NOTICE indicates potential damage to product and how to avoid the problem.

WARNING: A WARNING indicates a potential for product damage or serious personal injury.

It is important to understand the meaning of the following **HAZARD SIGNS** before continuing:

High Voltage and Shock Hazard:

High voltage can cause electric shock.
Turn off/unplug power before servicing.



High Temperature Hazard:

This part may cause scalding.
Do not touch. Surface may be hot.



No Touching Hazard:

This part may be hot or can cause electric shock.
Do not touch.



Use the following safety guidelines to help ensure your own personal safety and to help protect your equipment and surrounding environment from potential damage.



This product is an indoor game machine. Do not install outdoors.

Avoid installing in the following places to prevent fire, electric shock, injury and/or machine malfunctioning:

- Places subject to rain/moisture, or places subject to high humidity.
- Places subject to direct sunlight, or places subject to extremely hot or cold temperatures to ensure that it is used within the specified operating range.
- Places where inflammable gas may be present or in the vicinity of highly inflammable/volatile chemicals or items that can easily catch fire
- On unstable or sloped surfaces. The machine may topple or cause unforeseen accidents.
- Vicinity of fire exits, fire extinguishers etc that may block/prevent safety measures

IMPORTANT NOTE:

ALL REPAIRS MUST BE DONE TO ORIGINAL MANUFACTURER SPECIFICATIONS.

FAILURE TO DO SO VOID ALL WARRANTIES AND OPERATOR ASSUMES ALL RISKS.

Note: The contents of this manual may be updated without notice.

1. SPECIFICATIONS


Rated power supply: AC110V 50/60Hz

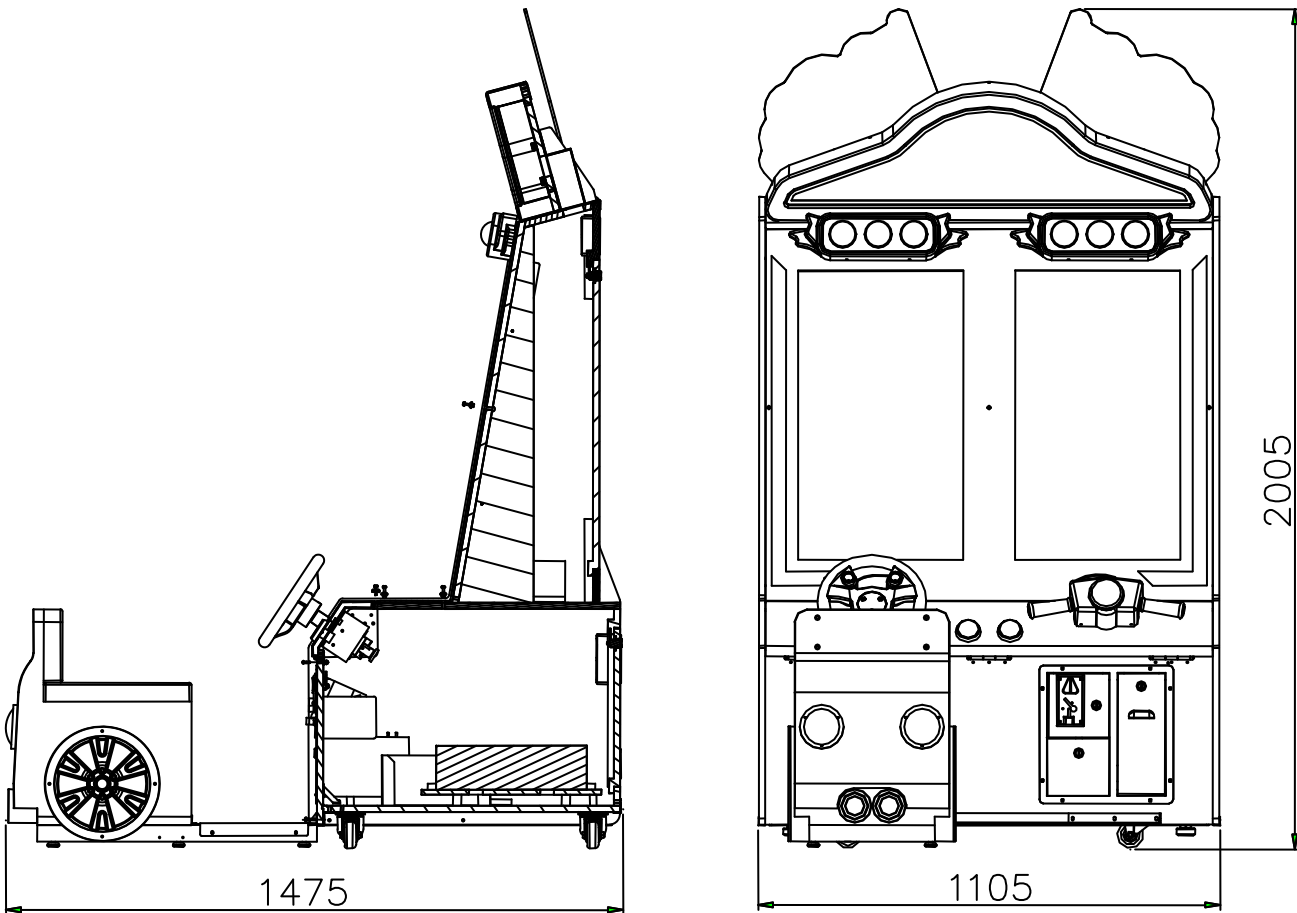
Min. Power consumption: 320W

Max. Power consumption: 360W

Dimensions: W1105×D1475×H2005 (mm)

Weight: Approximately 220kg

 **NOTICE:** After turning off the game, please wait at least 1 minute before restarting again.




Note: Game parameters are subject to change without notice.

2. PACKAGE CONTENTS

Open the package and make sure all the items are included:

- 1 x Body Assembly
- Following accessories

NO.	Part NO.	Code No.	Name	Spec.	Qty	Illustration
1	D121-734-000	4140000019	Manual	English	1	
2	D121-413-000	21901000013	Fuse	Φ5×20mm T10A 250VAC	1	
3	D121-446-000	23301010042	Power cord	3×16AWG 1M	1	
4	D121-190-000	25300000104	Key	C582	4	
5	D121-422-000	22501000030	5k POT	RVQ24YN03 25F B502	1	
6	D121-312-000	20101010011	Hexagon flat round head screws	M5×25 black	5	
7	D121-196-000	40607000013	2.5mm wrench	CR-V2.5mm	1	
8	D121-197-000	40607000014	3mm wrench	CR-V3mm	1	
9	D121-198-000	40607000001	4mm wrench	CR-V4mm	1	
10	D121-433-000	41300000005	Memory stick	8G	1	

If any items are found to be missing, please contact your sales representative for help immediately.

Warranty: Universal Space provides 90 days warranty for all electrical and mechanical components, when used under normal operating conditions. Any modification or abuse of these items immediately voids the warranty. Graphic and consumable items are exempt from any warranty.

NOTE: Part models are subject to change without notice.

3. PART NAME



4. SET UP & INSTALLATION

4-1 Cabinet Installation



1. Use the key to open the right ticket door.



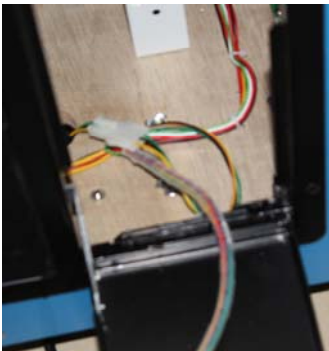
2. Fine the cable from the base at the right corner.



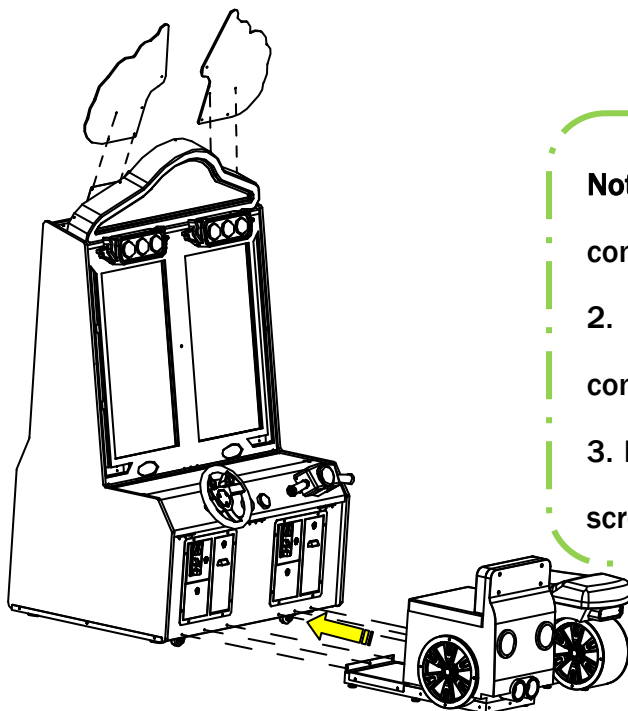
3. Pull the cable through the small hole of the main cabinet at the bottom.



4. Connect the cable.



5. Installation is finished.



Note: 1. According to the above instructions to connect the L&R POP board to the main cabinet
2. According to the above instructions to connect the seat assembly to the main cabinet.
3. Fasten two parts with 5 hexagon round head screws (M4X20).

! This product is an indoor game machine. Do not install outdoors.

- Refer to IMPORTANT SAFETY INSTRUCTIONS (Pg. 2) for places to avoid
- Place the unit on a dry level surface
- Ventilation openings in the back of the unit must not be obstructed by objects or by wall.

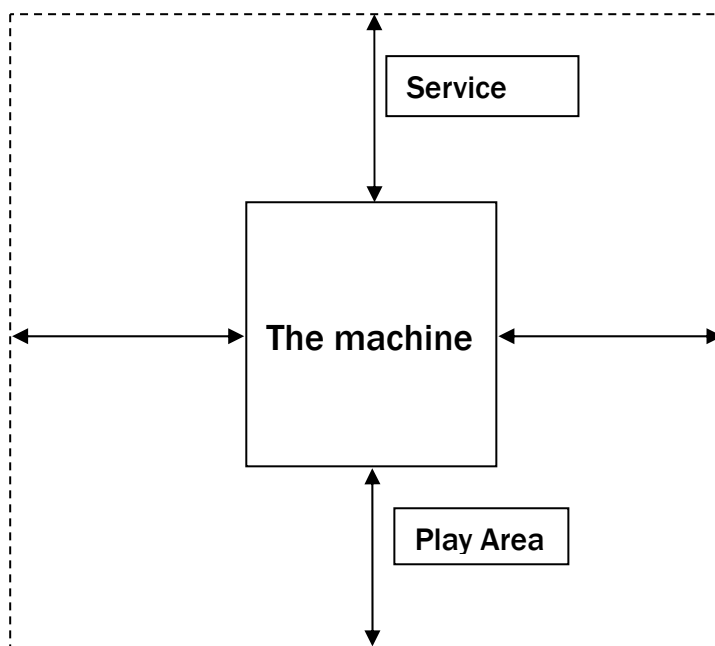
4.2 Play Zone

This machine requires space for playing and for maintenance as shown below.

Leave space around the game upon installation:

Service Area: 50cm

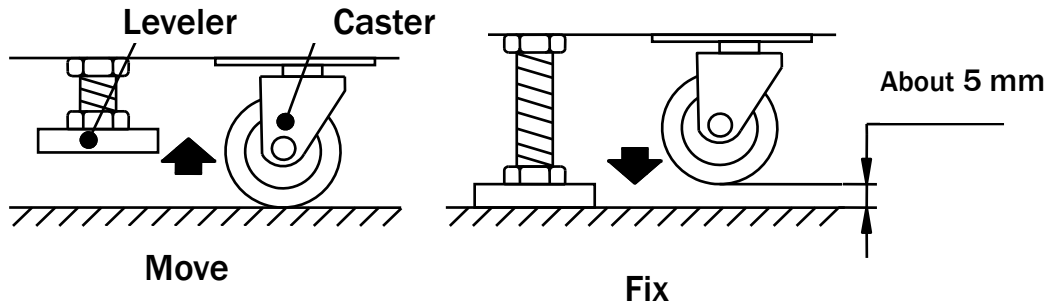
Play Area: 50cm



4.3 Level Adjustment

Install this machine on a flat surface. Adjust levers to lift casters off the ground to level the game. If the game is installed on an unsuitable floor, it could cause game malfunction.

To secure the game, adjust the Leveler down until it touches the floor, lifting the casters off the ground by 5mm. Repeat the same for all levelers.

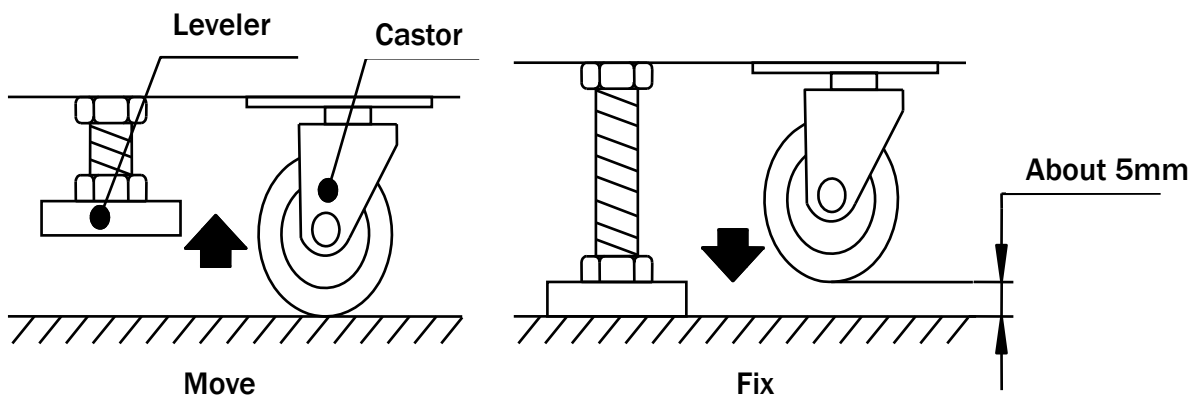


NOTICE

Make sure the machine is level with the ground and all the adjustable legs should stick to the floor closely.

4.4 Transporting the Machine


If you need to move the game, adjust the levelers back to an “up” position so the casters touch the ground.



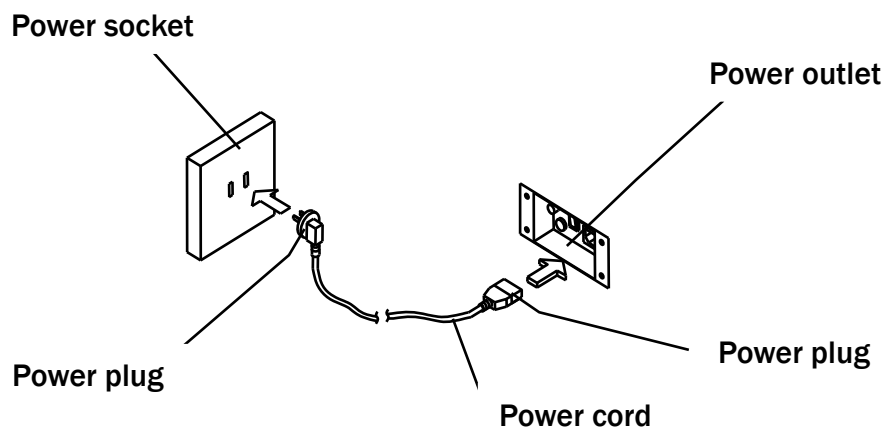
NOTICE

- Be careful not to damage the machine during transport.
- The machine should be handled with care when bringing it down from a higher level.
- Always unplug the game before moving.
- Keep the machine in upright position during transport.
- For longer distance transport, package the game properly to prevent damages.

4.5 Connecting Power

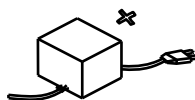
 **WARNING:** Check the voltage rating before you connect the equipment to an electrical outlet to ensure that the required voltage and frequency match the available power source. Please refer the label of the machine.

- Do not plug the equipment power cables into an electrical outlet if the power cable is damaged.
- Avoid putting many loads on one electrical outlet as it could generate heat and fire resulting from overload.
- Connect the grounding conductor to the earth terminal (GND):

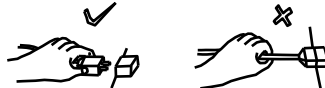


WARNING

Ensure no heavy objects rest on the power cord. Check to make sure the game cabinet does not sit on the power cord as this could damage the cord and become hazardous.



To disconnect the game, grip the plug and pull it from the wall outlet. Never pull by the cord.



To prevent electric shock, do not touch the power plug when hand is wet.



Ensure that nothing rests on the power cord and that it is not located where it can be stepped on or tripped over.



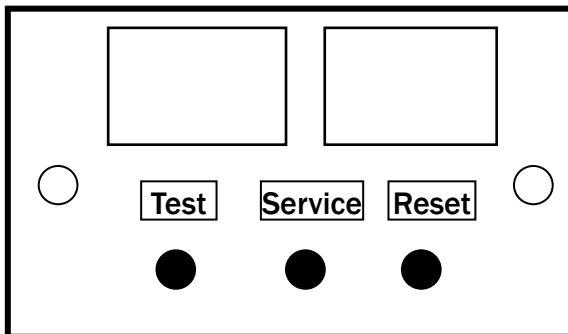
5. HOW TO PLAY



1. Insert coin(s) to start.
2. Select 1 player or 2 players.
3. Use the steering wheel to dodge obstacles and pick up special props.

6. GAME OPTION

6.1 Adjustment button instruction



Open the coin door there is a meter panel. Press test button to get into the setting menu.

6.2 Setting menu

6.2.1 Main Menu

- ▶ Game Mode
- Input
- Test
- Output test
- Game reset
- Language 语言
- Date/Time setting
- PC information
- Book keeping
- Daily Record
- Exit & without save
- Exit & save

6.2.2 Game Mode

Free Play	OFF
Tickets Out	ON
Attract Mode	ON
Save Coins	ON
Volume	10
Coins Per Game	1
Reward Tickets	10
Mercy Tickets	0
Game time(s)	60
Game Difficulty	easy
Score mode	Gear
Ticket mode	Store Tickets in Memory
Back	

Note:

No.	Item	Option	Explanation
1	Free Play	ON/OFF	Play game without credit in.
2	Tickets Out	ON/OFF	Whether payout tickets after game over.
3	Attract Mode	ON/OFF	Whether play with sounds during demo
4	Save Tickets	ON/OFF	Whether save tickets when power is off.
5	Volume	0~10	0 is mute. 10 are max.
6	Coins per Game	1~10	Coins to play one game.
7	Reward Tickets	0~50	Tickets for the winner.
8	Mercy Tickets	0-50	Tickets for the 2 nd place.
9	Game time(s)	45-60—80-100	Game play time (seconds).
10	Game Difficult	Easy/Normal/Hard	Set the difficulty to win.
11	Score mode	Star -Gear- coin	Select star or ring gold or token stands for score display on the screen.
12	Ticket Mode	Store tickets in memory/ call attendant	Whether continue to play the game when ticket is owed.

6.2.2 Input Test

Coin 1	NO/OFF
Coin 2	NO/OFF
Service button	NO/OFF
Reset button	NO/OFF
Select Button1	NO/OFF
Select Button2	NO/OFF
Speed Up Button	OFF
Wheel POT1	0
Wheel POT2	0
Speed Up	POT

6.2.3 Output Test

1P elect Button Light
2P Select Button Light
1P Tail Light
2P Tail Light
1P Game State Light
2P Game State Light
1P Ticket Driver
2P Ticket Driver
Back

6.2.4 Game reset

Reset Game Setting
 Delete A1 Record
 Clear Tickets
 Back

Note:	
Reset Game setting:	Reset all settings to default.
Delete All Record:	Clear all bookkeeping data,
Clear Ticket:	Clear owed tickets.

6.2.5 Select Language

English
 中文

6.2.6 Date/Time setting

Year 2013
 Month 8
 Day 27
 Hour 15
 Minute 22
 Second 22
 Save&back
 Back

6.2.7 PC information

CPU
 Mother board
 Disk Drive
 Memory
 Display adapter
 Display RAM size
 Press Test button to exit

6.2.8 Bookkeeping

Player	Coin	TicketsOut
1	0	0
2	0	0
Sum	0	0

Reset
 Back

6.2.9 Daily Record

Date	Weekday	RunTime	Coins	TicketsOut
2013-8-27	SAT	00:10	0	0

Reset
 Back

6.2.10 Exit & without save

6.2.11 Exit & save

7.3 Problem Analysis and Solution

Problem	Reason	Solution
Plugged machine without reaction	<ol style="list-style-type: none"> 1.Incongruent power 2. leakage protection switch 3. No 110v voltage 	<ol style="list-style-type: none"> 1.Whether power is accord with the machine 2.Detecting leakage switch is off, please turn on 3.Change power voltage
After electrify, hear WINDOWS startup voice but no game interface display and blank screen	<ol style="list-style-type: none"> 1.VGA holding line is loosen 2.Monitor damaged 3.Games reporting error 	<ol style="list-style-type: none"> 1. Check PC VGA holding wire is loosen, If loose to pull plug this line .If it's not this port problem, continue to check display VGA signal wire is loose. 2.Change monitor , if monitor is damaged, please dial this No.: 4006-020-321. 3. Update the game again
The power on ,display blue-screen and no sound	<ol style="list-style-type: none"> 1.PC power is loosen 2. VGA holding wire connects PC and monitor is loosen 3. PC video card loosen 4. PC on safeguard mode 	<ol style="list-style-type: none"> 1. Check PC power is loosen 2. Check VGA holding wire connects PC and monitor is loosen 3.Take apart PC cover, insert video card again. 4.Open front cover, if boot lamp has been flash, press start button for 30 seconds, restart again then .If you cannot solve problems, Please dial this No.:8008108888
Operation can appear system halted sometimes	<ol style="list-style-type: none"> 1. video card loosen or bad connection 2. PC crash 	<ol style="list-style-type: none"> 1. Insert video card again 2. Restart or system restore
Coin mech. No reaction	<ol style="list-style-type: none"> 1.Coin mech. damaged 2.holding wire loosen 3.No DC12V 4.IO control board damaged 	<ol style="list-style-type: none"> 1. Change coin mech. 2. check holding line is loosen 3. change switching voltage 4. change IO control board

Problem	Reason	Solution
Can play the game but there was no voice	<ol style="list-style-type: none"> 1. POT off 2. audio line is loosen 3. amplifier is damaged 4. speaker is damaged 	<ol style="list-style-type: none"> 1. Adapt the POT 2. Check audio line is loosen of PC on picture 1 3. Send to factory to repair 4. change a speaker
The power is on ,PC, display, amplifier is normal, but could not enter the game screen	<ol style="list-style-type: none"> 1. VGA serial port is loosen 2. IO control board is damaged 3. Dongle is damaged 	<ol style="list-style-type: none"> 1. Check PC and IO control board's VGA serial is loosen 2. Change IO control board 3. Change dongle
The interface bright lights didn't work	<ol style="list-style-type: none"> 1. DC12V connecting line is loosen 2. switching voltage is damaged 3. DC12V connecting line is short circuit 4. light control panel is damaged 	<ol style="list-style-type: none"> 1. check 12V connecting line is loosen 2. change SW power 3. check 12Vconnecting line is short circuit 4. change light control board

7.4 Coin Mech. Instruction

1. Spec.:

Applicable coins diameter: 21mm ~28mm

Apply thickness of coins: 1.7mm ~2.0mm

Operating voltage: DC +12V

Operating temperature: -15°C ~+75°C

2.Usage:

a. Insert coins into groove you need.

b. Cooperate the need with machine of receive signal to inset coins. Changing-over three time switches—fast, medium, and slow, but the “medium” is the factory settings.

c. VR knob is to adjust the coins 'sensitivity, clockwise (+) to spin is loose, otherwise, tight.

Adjust VR knob according to any kinds of coin, no coin or less coin, towards to (+), otherwise, towards to(-).

8. MAINTENANCE & INSPECTION

8.1 Safety Check

Check the points listed before operating the machine. These checks are necessary for safe machine operation:

1. Try to run the game before operation each day.
2. Conduct monthly routine checks of game components ensure good working condition
3. Check the machine regularly for dust and clean when necessary.

Note: Parts and components require preventative maintenance to be kept running smoothly

8.2 Handling Precautions

When installing or inspecting the machine, be very careful of the following points and pay attention to ensure that the player can enjoy the game safely.

Non-compliance with the following points or inappropriate handling running counter to the cautionary matters herein stated can cause personal injury or damage to the machine

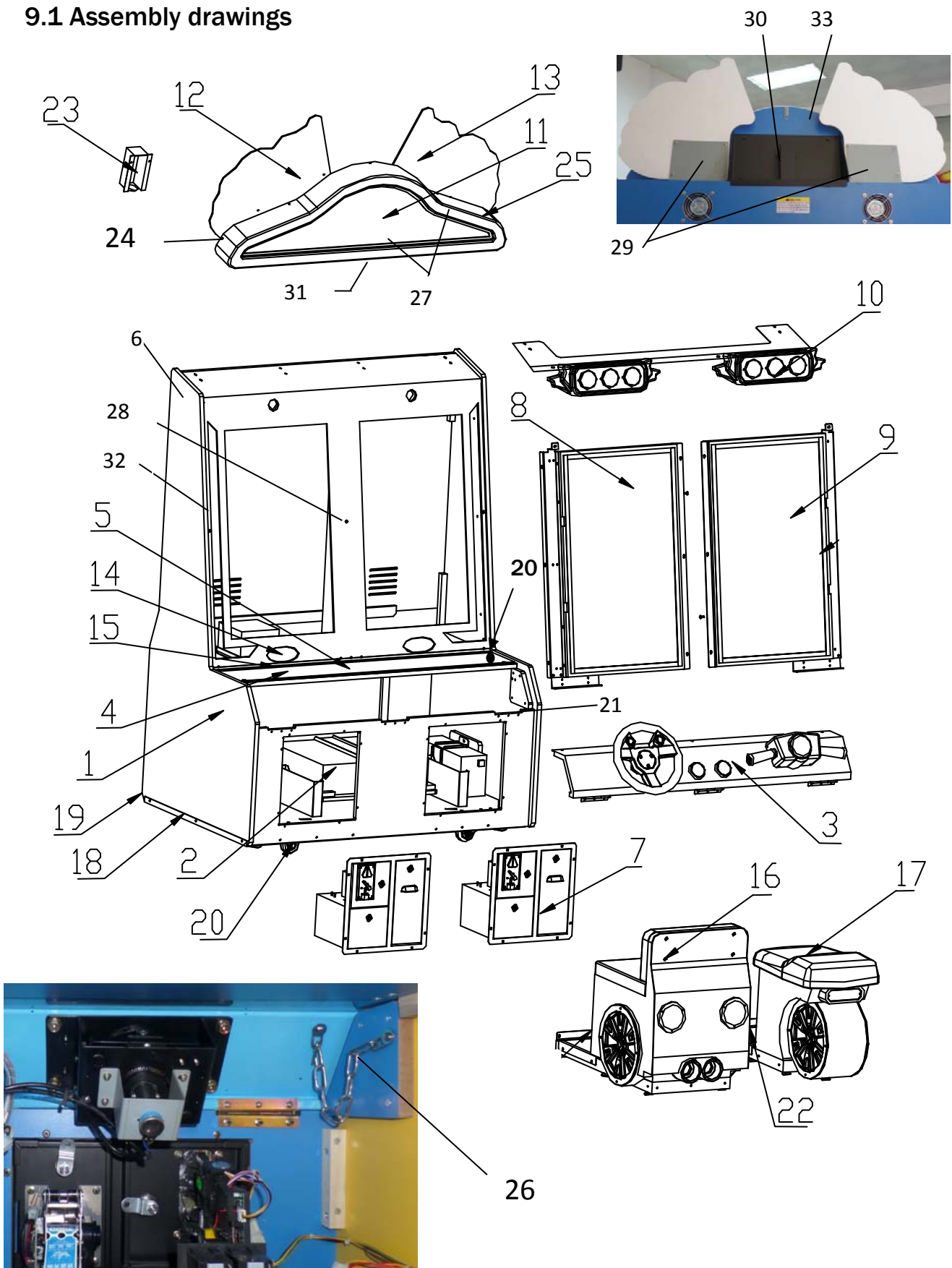


WARNING

- Before servicing the machine, be sure to turn power off. Servicing without turning the power off can cause electric shock or short circuit.
- To avoid electric shock or short circuit, do not plug then unplug the power quickly
- Do not expose power cords and earth wires, these are susceptible to damage.
- Damaged cords and wires can cause electric shock or short circuit and should be replaced immediately.
- When or after installing the product, avoid pulling the power cord to prevent unnecessary wear and tear. Use the power button to disconnect power.
- In case the power cord is damaged, ask for replacement through where the product was purchased from or replace locally. Continued usage of damaged cord can cause fire, electric shock or leakage.
- Perform grounding appropriately. Inappropriate grounding can cause electric shock.
- Use fuses that meet specified rating. Fuses exceeding can cause an electric shock.
- Should a problem occur, turn off the power immediately and stop operating the machine. Unplug the power cord of the service outlet. Operating the machine without correcting the problem may cause a fire or injuries.
- Insert the power plug securely into the outlet. Poor contact may cause overheating, resulting in fire or burns.
- To ensure the warning labels attached on the machine are visible and legible, install the machine in a well-lit location, and keep the labels clean at all times. Make sure the labels are not hidden behind other game machines.

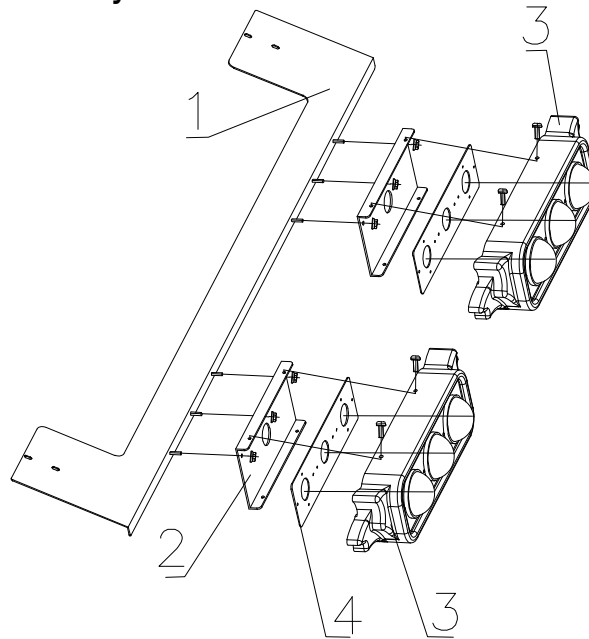
9. OVERALL CONSTRUCTION

9.1 Assembly drawings



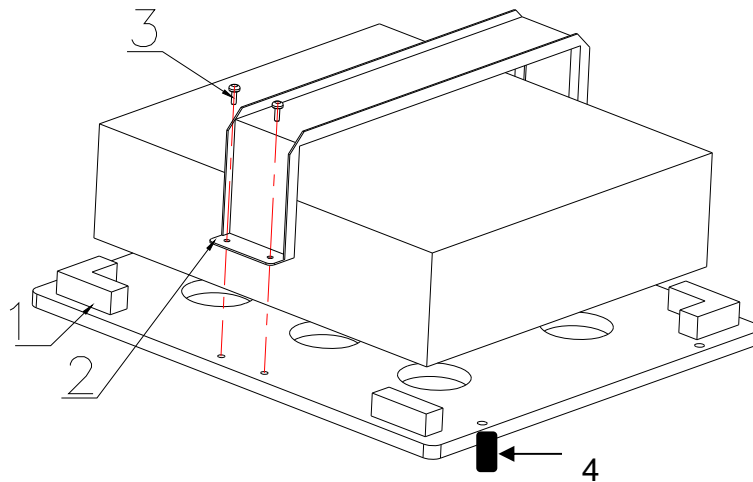
No	Part No.	Code No.	Name	SPEC.	Qty
1	D121-004-000	29941317B001	Cabinet assy.	Assembly	1
2	D121-003-000	29941317B002	DELL assy.	Assembly	1
3	D121-005-000	29941317B003	Control panel assy.	Assembly	1
4	D121-606-000	20641317B001	Control panel bed plate	black EVA	1
5	D121-701-000	20541317B003	Control panel decal	Clear plastic	1
6	D121-530-000	35102000014	Blue panel	08 blue	2
7	D121-001-000	DZPPL-00-01	Coin door assy.	Assembly	1
8	D121-006-000	29941317B004	Left monitor assy.	Assembly	1
9	D121-007-000	29941317B005	Right monitor assy.	Assembly	1
10	D121-010-000	29941317B008	Traffic light assy.	Assembly	1
11	D121-011-000	29941317B009	Marquee assy.	Assembly	1
12	D121-012-000	29941317B010	Left top decal assy.	Assembly	1
13	D121-013-000	29941317B011	Right top decal assy.	Assembly	1
14	D121-122-000	20241317B002	Speaker drill	ø1 black	2
15	D121-123-000	20241317B003	Plastic bottom plate	Q235	1
16	D121-008-000	29941317B006	Car seat assy.	Assembly	1
17	D121-009-000	29941317B007	Motorbike seat assy.	Assembly	1
18	D121-109-000	20241317007	Side base plate	ø1.2 black	2
19	D121-110-000	20241317008	Back base plate	ø1.2 black	1
20	D121-111-000	20241317009	Screw base plate	ø5	3
21	D121-191-000	40501000039	Black Trim	15MM black	0.4m
22	D121-158-000	20241317B039	Motorbike connected plate	Q235	1
23	D121-121-000	20241317B001	Marquee back cover plate	Q235	1
24	D121-165-000	20241317B046	Marquee vacuum form bracket	ø2	5
25	D121-623-000	20641317B018	Marquee frame	ø3	1
26	D121-108-000	20241317006	Chain	Q235	2
27	D121-018-000	29941317B015	Marquee cover assy.	Assembly	1
28	D121-179-000	26000040000	5mm Screw pad	ABS	8
29	D121-168-000	20241317B049	Top sign mounted plate	Metal	2
30	D121-167-000	20241317B048	Marquee bracket	Q235	1
31	D121-166-000	20241317B047	Light isolated bracket	Q235	1
32	D121-188-000	40501000041	T-molding	15MM silver	4.4m
33	D121-524-000	20341317B021	Marquee back wooden plate	ø15	1

9.2 Traffic Light Assembly



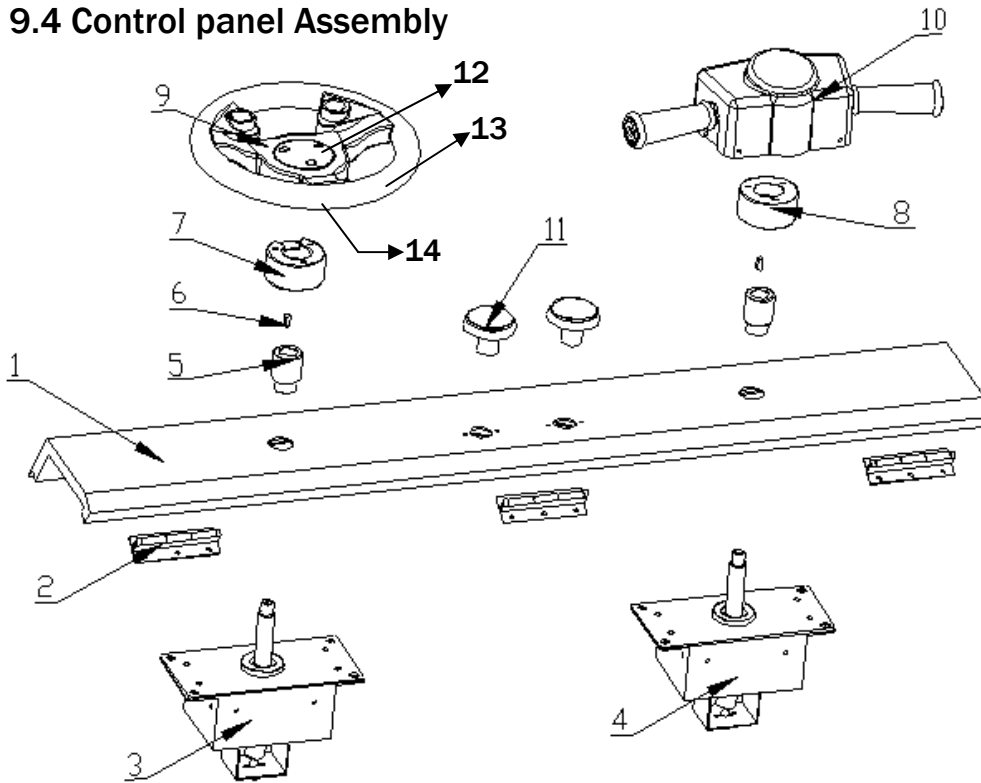
NO.	Part NO.	Code NO.	Name	Qty	Qty
1	D121-163-000	20241317B044	Plastic upper plate	Q235 δ15	1
2	D121-164-000	20241317B045	Traffic light bracket plate	Q235 δ15	1
3	D121-622-000	20641317B017	Traffic light holder	ABS δ3	2
4	D121-199-000	20241317B054	Traffic light mounting plate	SECCδ1.5	2

9.3 PC Assembly



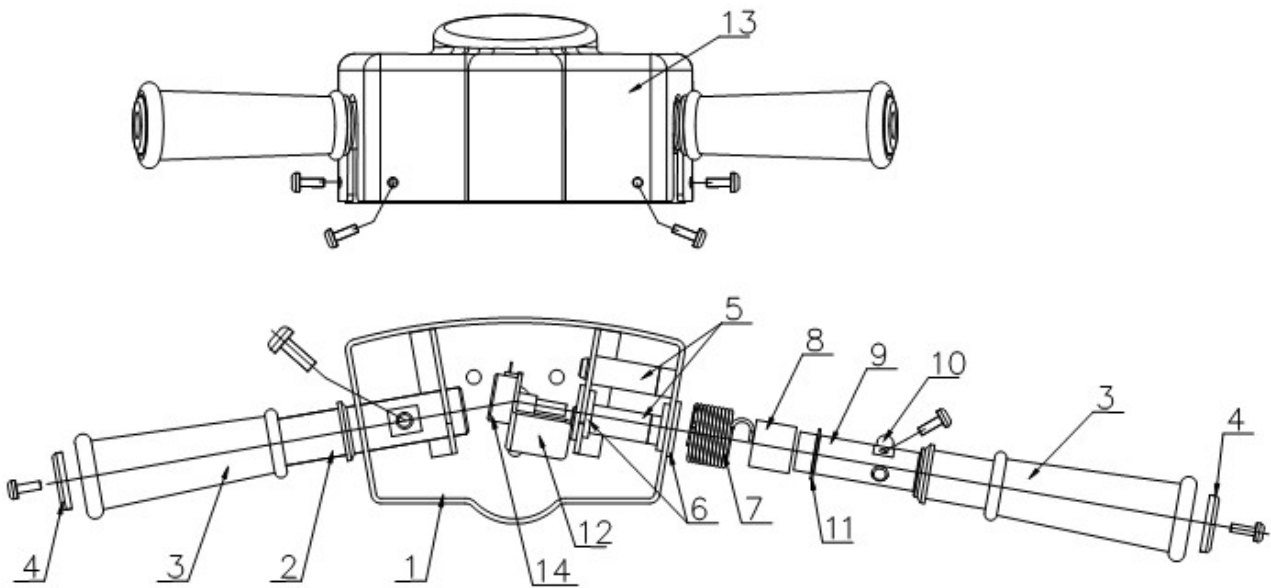
NO.	Part NO.	Code NO.	Name	Qty	Qty
1	D121-523-000	20341317B018	PC mounted wooden plate	δ15	1
2	D121-112-000	20241317B008	PC bracket	T=1.5 SECC	1
3	D121-318-000	20101020037	Cross recessed pan head screw suite	M4×20 Color zinc Q235	4
4	D121-172-000	26000012000	Shake proof screw A	color Zinc	4

9.4 Control panel Assembly



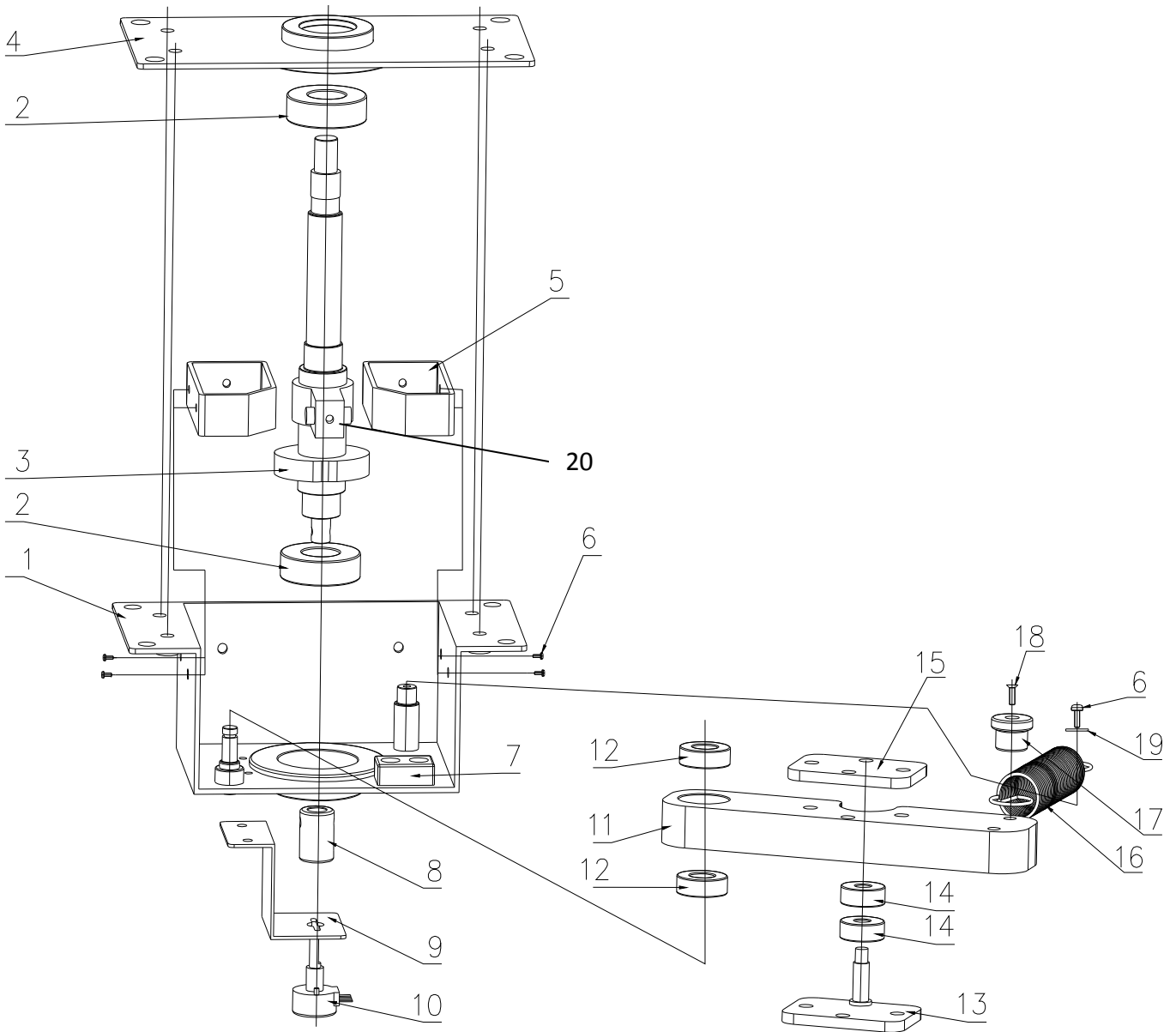
NO.	Part NO.	Code NO.	Name	SPEC.	Qty
1	D121-128-000	20241317B009	Control panel plate	δ2 /δ1.5 blue	1
2	D121-185-000	26300000001	Hinge	4"	3
3	D121-014-000	29941317B012	Car motion assy.	Assembly	1
4	D121-015-000	29941317B013	Motor motion assy.	Assembly	1
5	D121-140-000	20241317B021	Shaft sleeve	Q235	2
6	D121-141-000	20241317B022	Key	Q235	2
7	D121-142-000	20241317B023	Car connected shaft bracket	Q235	1
8	D121-143-000	20241317B024	Motorbike connected shaft bracket	Q235	1
9	D121-002-000	29940803004	Steering wheel assy.	Assembly	1
10	D121-016-000	29941317B014	Motorbike steering assy.	M12	1
11	D121-426-000	22401000005	Horn Button	White Φ60	2
12	D121-602-000	20640803008	Steering wheel shaft cap	ABS	1
13	D121-601-000	20640803007	Steering wheel	Black ABS	1
14	D121-603-000	20640803009	Steering wheel back cap	ABS	1

9.5 Motorbike steering wheel Assembly



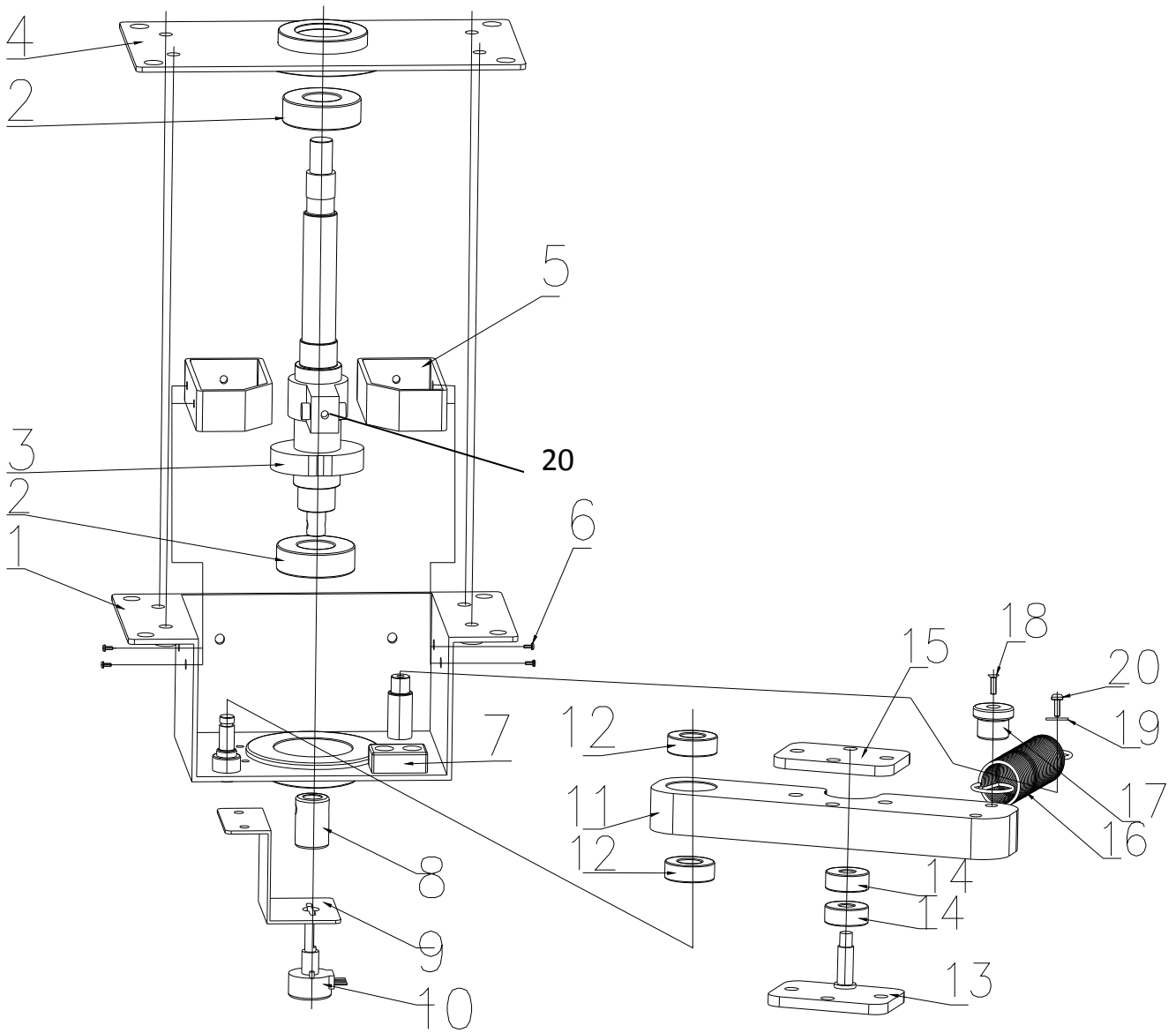
NO.	Part NO.	Code NO.	Name	SPEC.	Qty
1	D121-134-000	20241317B015	Motorbike steering wheel bracket	Q235	1
2	D121-135-000	20241317B016	Left handle grip	Q235	1
3	D121-605-000	20641317006	Handle grip sleeve	PU	2
4	D121-120-000	20241317031	Washer plate	202 stainless steel	2
5	D121-610-000	20641317B005	Stopping post	Polyurethane	2
6	D121-611-000	20641317B006	Handle washer	Black POM	2
7	D121-136-000	20241317B017	Handle spring	65Mn	1
8	D121-612-000	20641317B007	Spring sleeve	Black POM	1
9	D121-137-000	20241317B018	Right handle grip	Q235	1
10	D121-138-000	20241317B019	Locating shaft	Q235	1
11	D121-352-000	20105000029	A type circlip for shaft	Q235	1
12	D121-139-000	20241317B020	POT bracket	SCEE	1
13	D121-609-000	20641317B004	Motorbike steering wheel cover	ABS	1
14	D121-411-000	22501000033	Steering wheel POT	RB50K	1

9.6 Car Motion Assembly



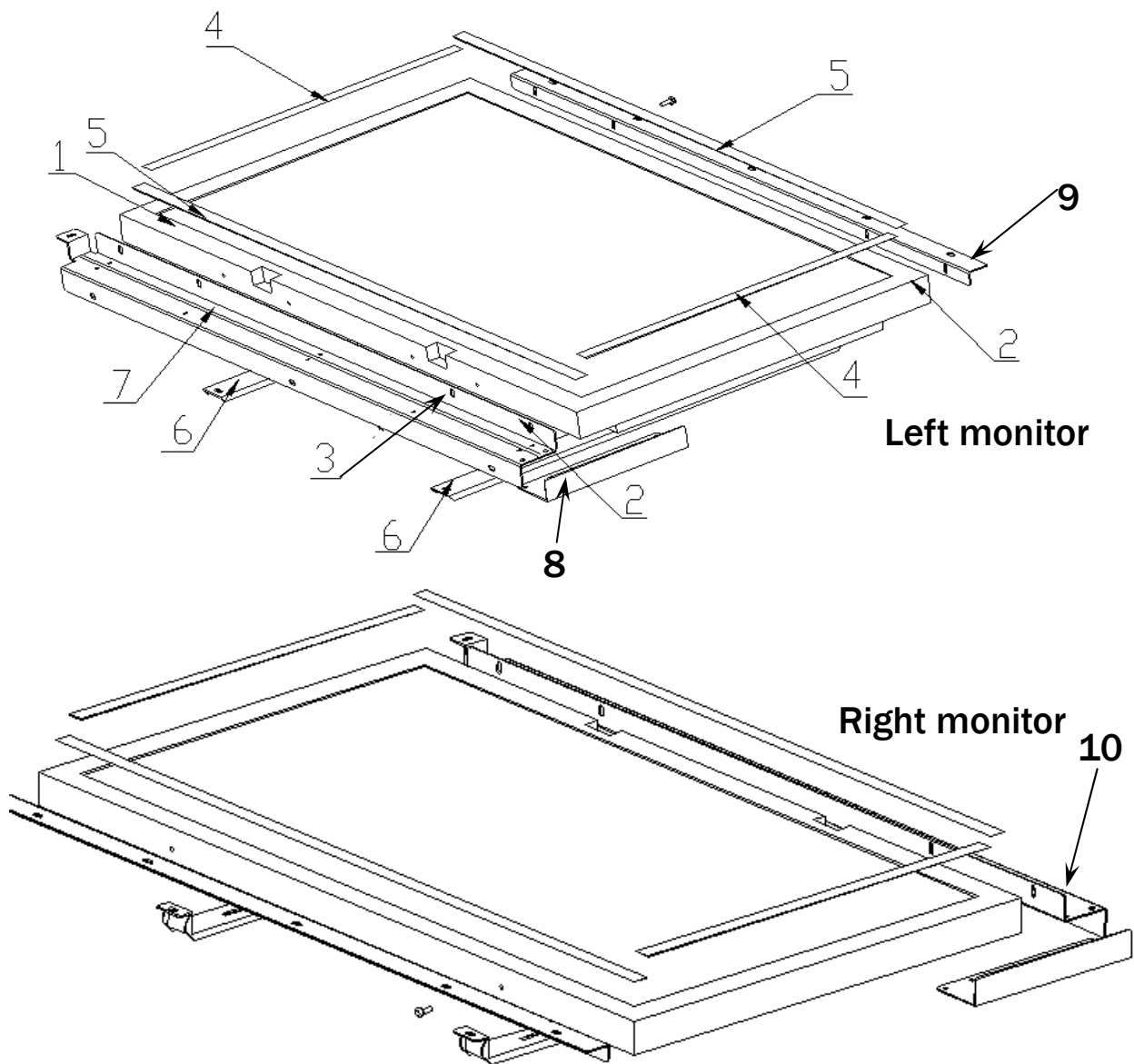
NO.	Part NO.	Code NO.	Name	SPEC.	Qty
1	D121-129-000	20241317B010	Motion fixed bracket	δ2.5 black Q235	1
2	D121-192-000	20106000175	Deep groove ball BR.	6004-2Z	2
3	D121-131-000	20241317B012	Spindle	Black 45#	1
4	D121-130-000	20241317B011	Motion fixed cover plate	δ2.5 Black Q235	1
5	D121-118-000	20241317025	Car shaft locating block	δ3 Black Q235	2
6	D121-303-000	20101000034	Cross recessed pan head screw suite	M4×10	6
7	D121-608-000	20641317B003	Cable pad	Black EVA	1
8	D121-132-000	20241317B013	Coupler	Φ18 Black Q235	1
9	D121-133-000	20241317B014	Pot. mounting plate	δ1.5 black	1
10	D121-422-000	22501000030	5K Pot	RVQ24YN03 25F B502	1
11	D121-113-000	20241317018	Pressing plate	δ12 Black Q235	1
12	D121-194-000	20106000312	Deep groove ball BR.	628/8-2Z	2
13	D121-115-000	20241317020	BR. supporting plate	δ2 Black Q235	1
14	D121-193-000	20106000011	Deep groove ball BR.	605ZZ	2
15	D121-114-000	20241317019	BR. pressing plate	δ2 Black Q235	1
16	D121-116-000	20241317023	Extension spring	Φ2 Black	1
17	D121-117-000	20241317024	Spring block	Φ13 Black Q235	1
18	D121-322-000	20101040018	Cross recessed sunk head screw	M4×16	1
19	D121-353-000	20113000056	C flat washer	5×1.3h	1
20	D121-607-000	20641317B002	Damping rubber	Polyamine	1

9.7 Motorbike Motion Assembly



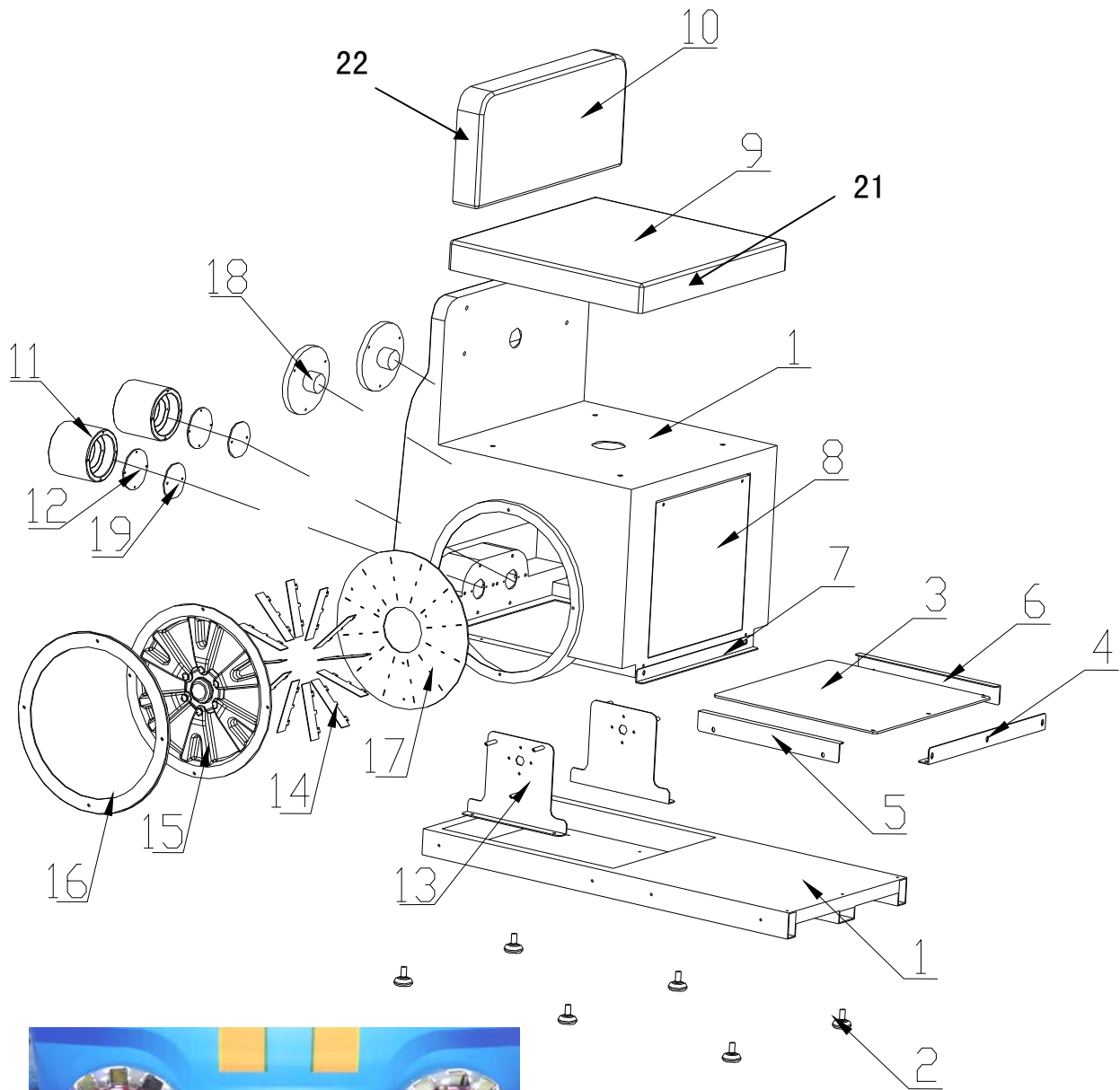
NO.	Part NO.	Code NO.	Name	SPEC.	Qty
1	D121-129-000	20241317B010	Motion fixed bracket	δ2.5 black Q235	1
2	D121-192-000	20106000175	Deep groove ball BR.	6004-2Z	2
3	D121-131-000	20241317B012	Spindle	Black 45#	1
4	D121-130-000	20241317B011	Motion fixed cover plate	δ2.5 Black Q235	1
5	D121-119-000	20241317027	Moto shaft locating block	δ3 Black Q235	2
6	D121-303-000	20101000034	Cross recessed pan head screw suite	M4×10	6
7	D121-608-000	20641317B003	Cable pad	Black EVA	1
8	D121-132-000	20241317B013	Coupler	Φ18 Black Q235	1
9	D121-133-000	20241317B014	Pot. mounting plate	δ1.5 black	1
10	D121-422-000	22501000030	5K Pot	RVQ24YN03 25F B502	1
11	D121-113-000	20241317018	Pressing plate	δ12 Black Q235	1
12	D121-194-000	20106000312	Deep groove ball BR.	628/8-2Z	2
13	D121-115-000	20241317020	BR. supporting plate	δ2 Black Q235	1
14	D121-193-000	20106000011	Deep groove ball BR.	605ZZ	2
15	D121-114-000	20241317019	BR. pressing plate	δ2 Black Q235	1
16	D121-116-000	20241317023	Extension spring	Φ2 Black	1
17	D121-117-000	20241317024	Spring block	Φ13 Black Q235	1
18	D121-322-000	20101040018	Cross recessed sunk head screw	M4×16	1
19	D121-353-000	20113000056	C flat washer	5×1.3h	1
20	D121-607-000	20641317B002	Damping rubber	Polyamine	1

9.8 Monitor Assembly



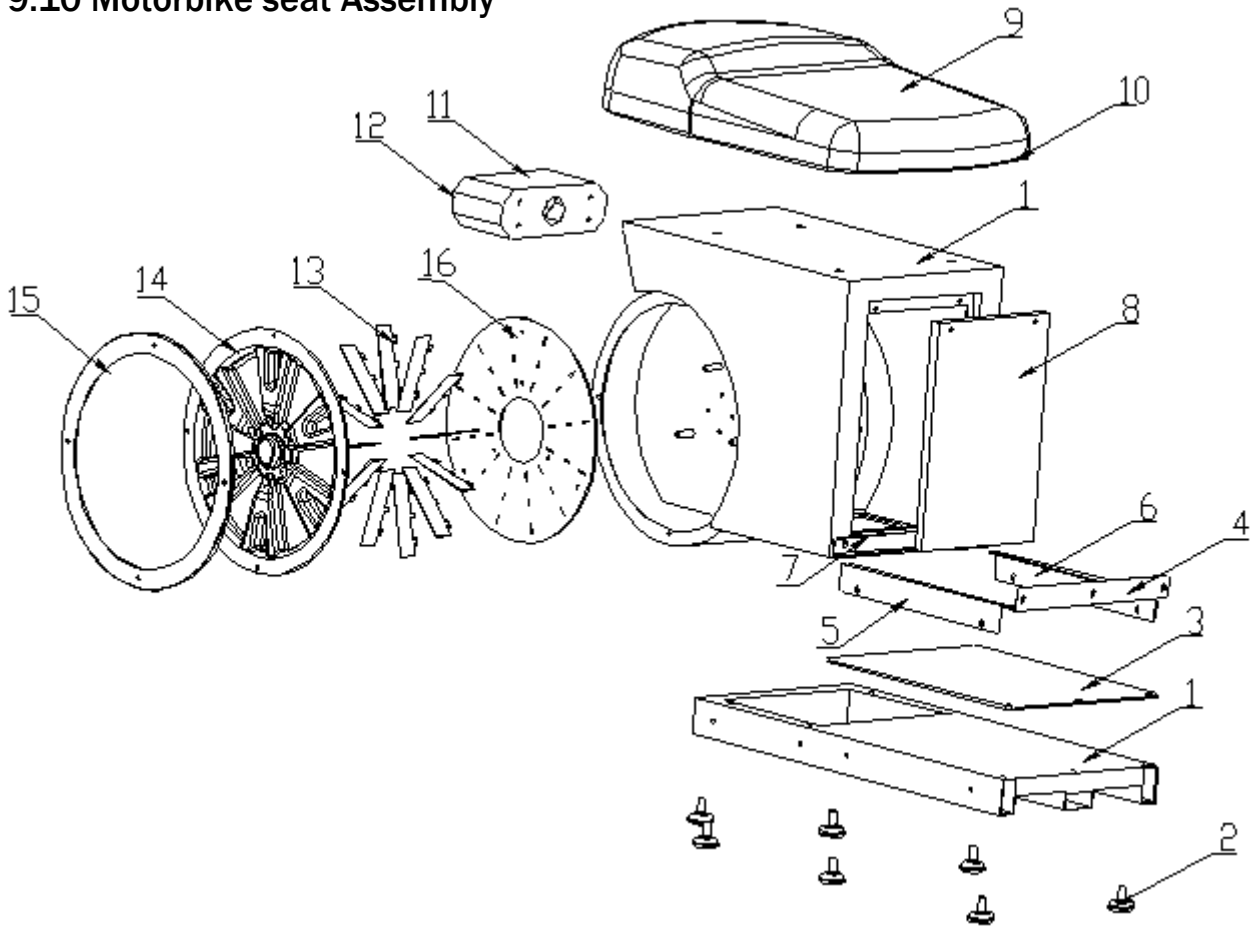
NO.	Part NO.	Code NO.	Name	SPEC.	Qty
1	D121-447-000	21201032004	Monitor	32"	1
2	D121-145-000	20241317B026	Monitor left mounted plate	Q235	1
3	D121-317-000	20101020035	Cross recessed pan head screw suite	M4×12 Color zinc	4
4	D121-359-000	20641317011	Monitor vertical strip	black EVA	2
5	D121-360-000	20641317010	Monitor horizontal strip	black EVA	2
6	D121-361-000	20241317042	Monitor reinforcing plate	Metal	2
7	D121-613-000	20641317B008	Light base plate	EVA	2
8	D121-147-000	20241317B028	Light cover fixed plate	Q235	2
9	D121-144-000	20241317B025	Monitor mounted plate	Metal	2
10	D121-146-000	20241317B027	Monitor right mounted plate	Q235	1

9.9 Car seat Assembly



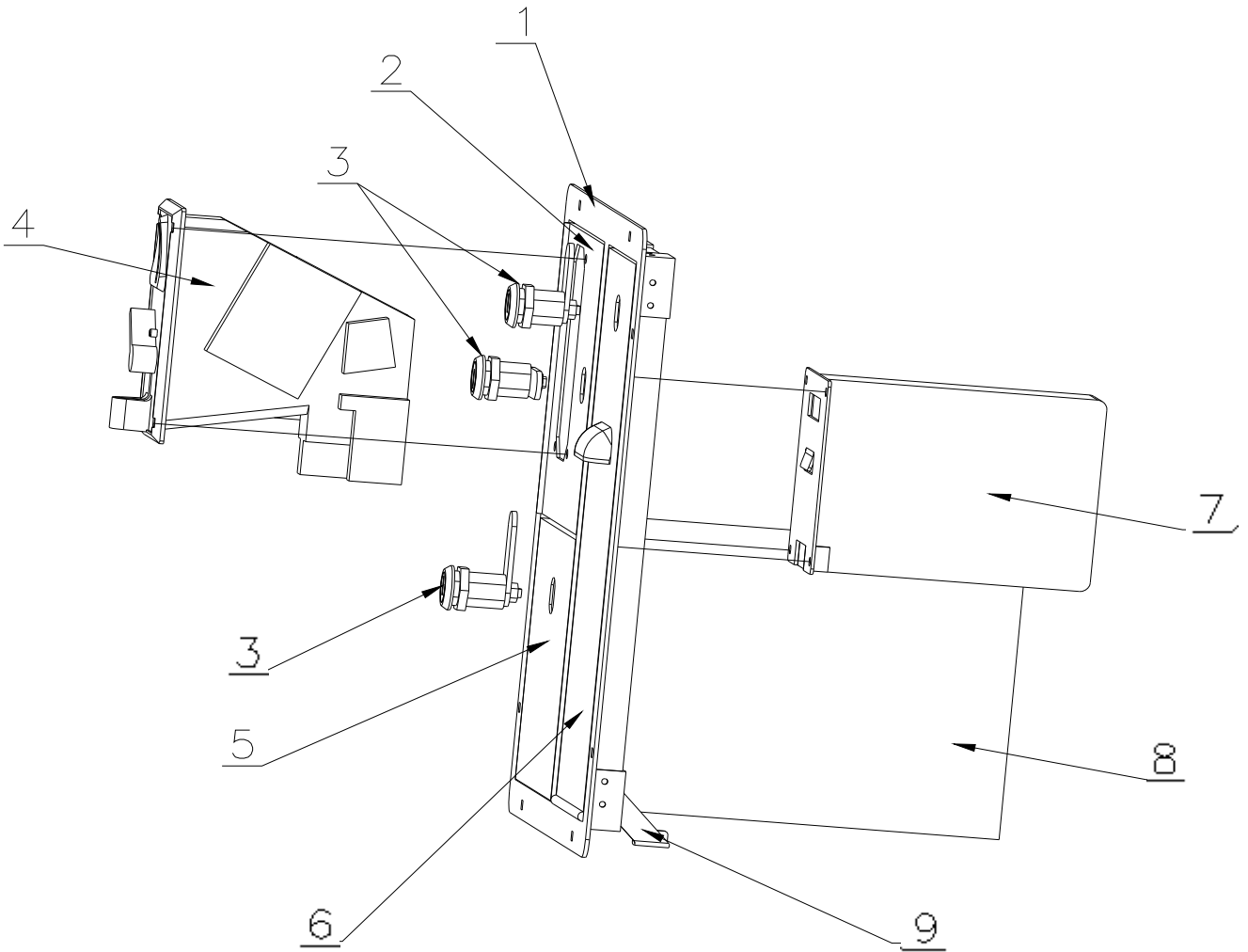
NO.	Part NO.	Code NO.	Name	SPEC.	Qty
1	D121-148-000	20241317B029	Car seat body	ø1.5 blue Q235	1
2	D121-195-000	25900022001	Car leveller	M8×15 white	6
3	D121-615-000	20641317B010	Car antiskid plate	Black rubber	1
4	D121-149-000	20241317B030	Car connected plate	Black Q235	1
5	D121-150-000	20241317B031	Left side bracket	Black Q235	1
6	D121-169-000	20241317B051	Right side bracket	Black Q235	1
7	D121-151-000	20241317B032	Car antiskid bracket	ø1.5 Black Q235	1
8	D121-152-000	20241317B033	Car seat front door	Blue Q235	1
9	D121-616-000	20641317B011	Car seat cushion	ø45 black	1
10	D121-617-000	20641317B012	Car seat back cushion	ø45 black	1
11	D121-153-000	20241317B034	Car exhaust	Φ80	2
12	D121-618-000	20641317B013	Tail light cover	White	2
13	D121-154-000	20241317B035	Light board mounted plate	Black Q235	2
14	D121-155-000	20241317B036	Light separated bar	Aluminum	12
15	D121-614-000	20641317B009	Wheel cover	White plastic	4
16	D121-156-000	20241317B037	Wheel ring	Q235 blue	1
17	D121-430-000	20711012002	Car wheel light pcb	BBGS-A2-PCB(V1.0)	2
18	D121-440-000	22003070008	Car tail light	L-040 red	2
19	D121-425-000	29741208001	LED light board	TJXS-PGLED	2
20	D121-604-000	20641105026	Monitor corner protected cover	Red rubber	2
21	D121-525-000	20341317B019	Car seat wooden plate	ø15	1
22	D121-526-000	20341317B020	Car back wooden plate	ø15	1

9.10 Motorbike seat Assembly



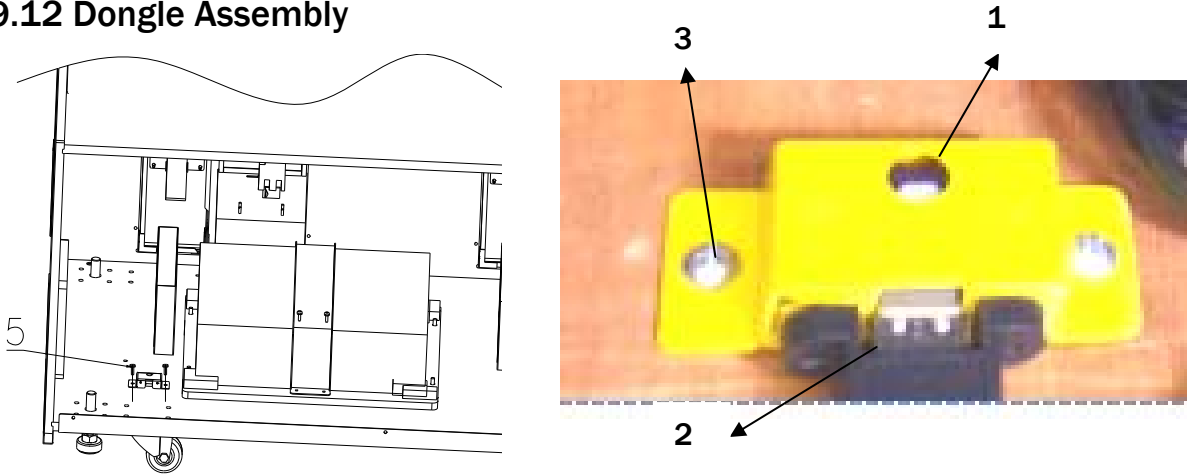
NO.	Part NO.	Code NO.	Name	SPEC.	Qty
1	D121-157-000	20241317B038	Motorbike seat base	ø1.5 blue Q235	1
2	D121-195-000	25900022001	Car leveller	M8×15 white	6
3	D121-619-000	20641317B014	Motorbike antiskid plate	Black rubber	1
4	D121-158-000	20241317B039	Motorbike connected plate	Black Q235	1
5	D121-150-000	20241317B031	Left side bracket	Black Q235	1
6	D121-169-000	20241317B051	Right side bracket	Black Q235	1
7	D121-159-000	20241317B040	Motorbike antiskid bracket	ø1.5 Black Q235	1
8	D121-160-000	20241317B041	Motorbike seat front door	Black Q235	1
9	D121-620-000	20641317B015	Motorbike seat cushion	PU	1
10	D121-161-000	20241317B042	Seat fixed plate	Q235	1
11	D121-162-000	20241317B043	Motorbike taillight bracket	Q235	1
12	D121-621-000	20641317B016	Motorbike tail light cover	white plastic	1
13	D121-155-000	20241317B036	Light separated bar	Aluminum	12
14	D121-614-000	20641317B009	Wheel cover	white	4
15	D121-156-000	20241317B037	Wheel ring	Q235 blue	1
16	D121-430-000	20711012002	Car wheel light pcb	BBGS-A2-PCB	2

9.11 Coin door Assembly



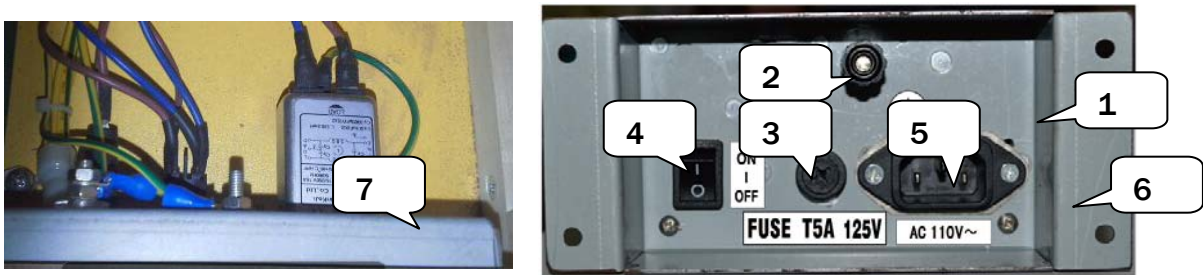
NO.	Part NO.	Code NO.	Name	SPEC.	Qty
1	D121-101-000	20210911042	Door frame	δ2 black Q235	1
2	D121-106-000	20210911047	Coin door	δ1.5 black Q235	1
3	D121-189-000	25300000004	Lock	C582	3
4	D121-460-000	22301000029	Coin mech.	CEC	1
5	D121-105-000	20210911046	Coin inner box	δ1.2 black Q235	1
6	D121-107-000	20210911048	Ticket door	δ1.5 black Q235	1
7	D121-450-000	23100000005	Ticket dispenser	CL-022Q-270	1
8	D121-104-000	20210911045	Coin outer box	δ1.5 black Q235	1
9	D121-176-000	26000018004	Hook	δ2(Color zinc) Q235	1

9.12 Dongle Assembly



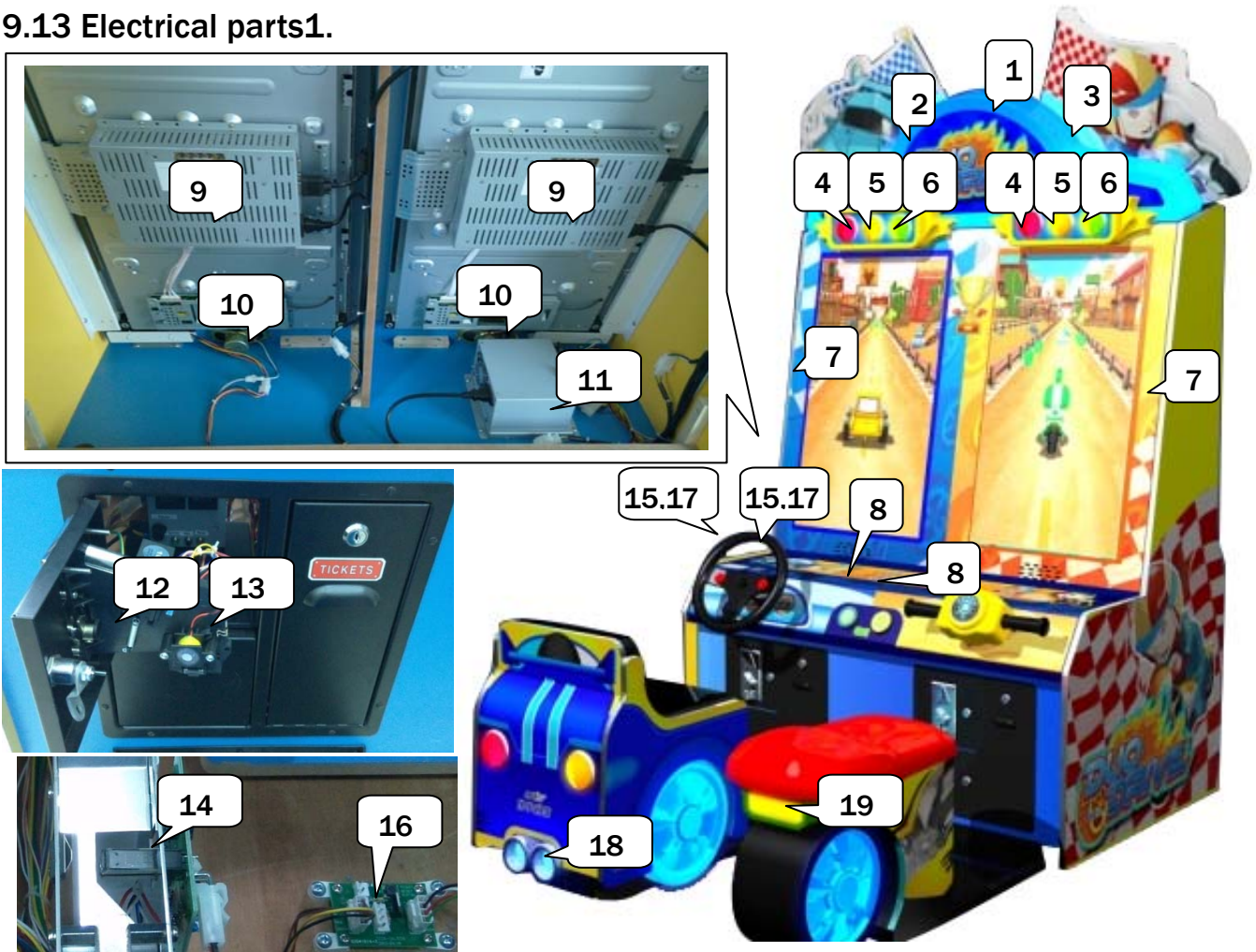
NO.	Part NO.	Code NO.	Name	SPEC.	Qty
1	D121-124-000	20241317B004	Dongle holder	Q235 δ1	1
2	D121-414-000	21107020036	Dongle	HASP HL PRO	1
3	20101100025	20101100025	Cross recessed pan head screw	stainless steel M4*16	2

9.13 Power box Assembly



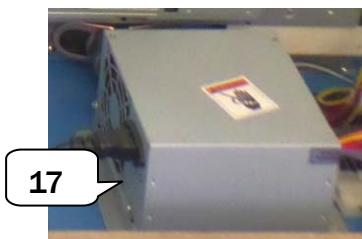
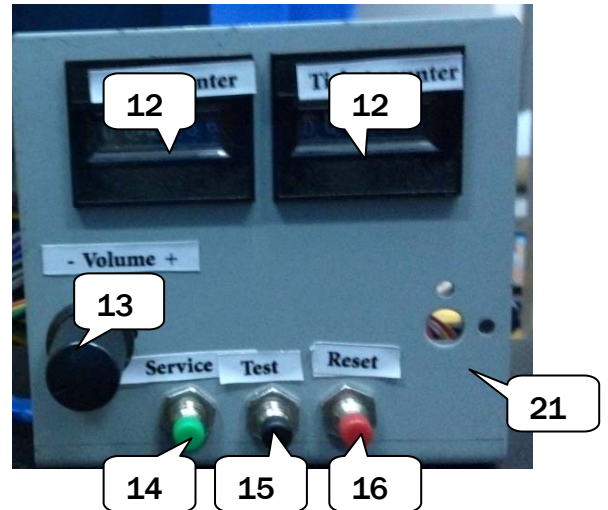
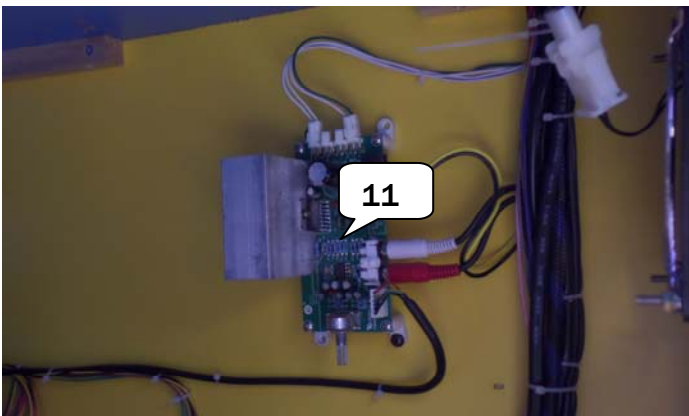
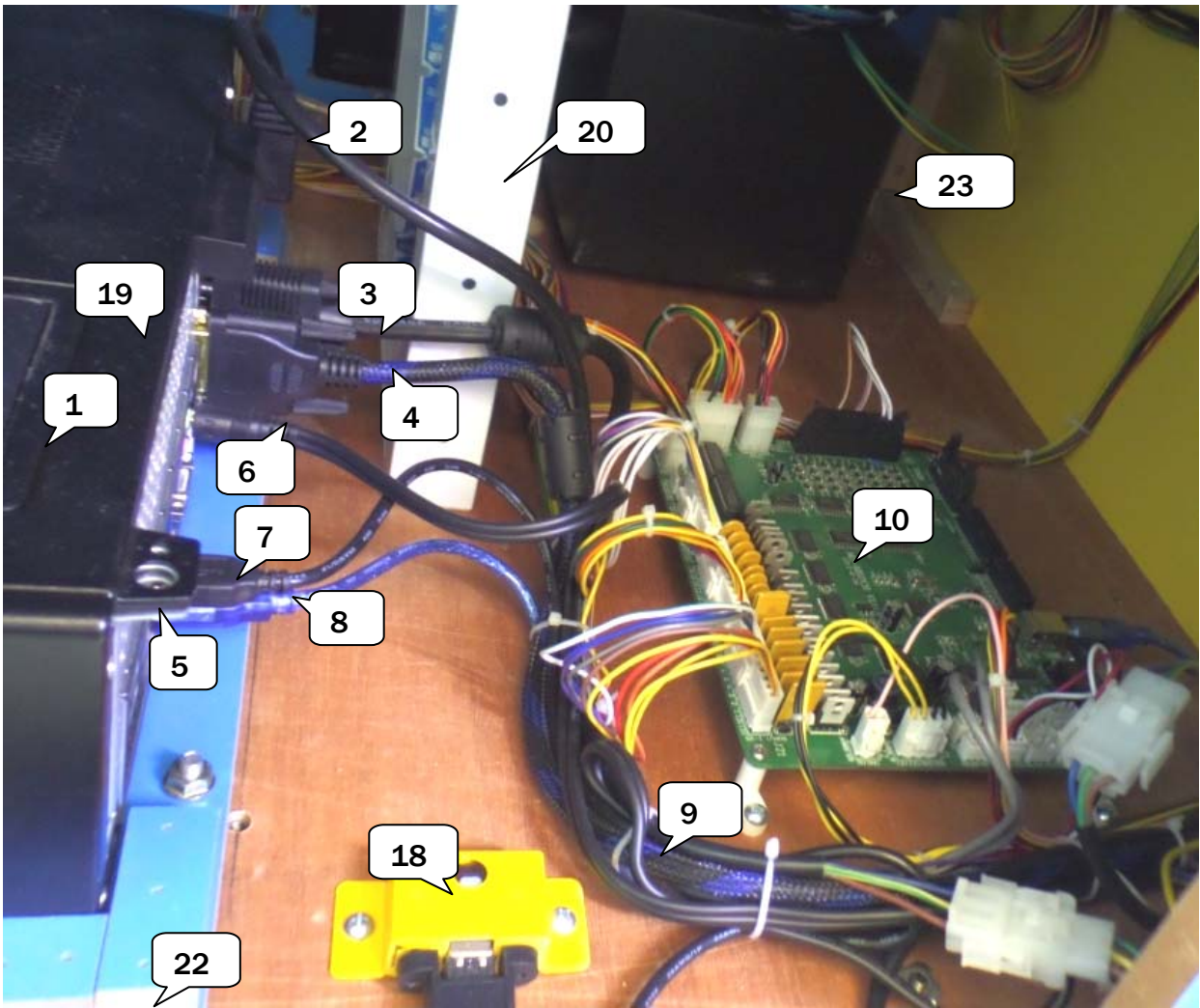
NO.	Part NO.	Code NO.	Name	SPEC.	Qty
1	D121-017-000	26000042000	Power box assy.	Assembly	1
2	D121-458-000	21412000001	Terminal	10A/15A/250V black	1
3	D121-406-000	22601000005	Rocket SW	T125/55	1
4	D121-402-000	21902000006	Fuse socket	R3-11 110V/250V/10A	1
5	D121-413-000	21901000013	Fuse	Φ5×20mm T10A 250VAC	2
	D121-401-000	23200000001	Filter	115/250V10A	1
6	D121-181-000	26000042001	Power box	Metal	1
7	D121-182-000	26000042002	Power box cover	Metal	1

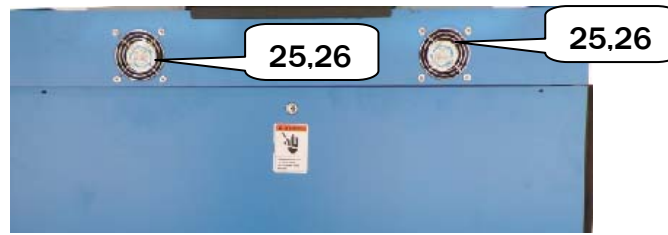
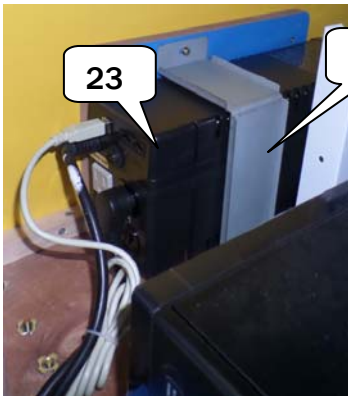
9.13 Electrical parts1.



NO.	Part NO.	Code NO.	Name	SPEC.	Qty
1	D121-429-000	22002013013	Marquee flexible light belt	DV12V blue	1
2	D121-418-000	22003080003	Marquee light - short	W5630-LC30cm-60z/m	1
3	D121-419-000	22003080001	Marquee light - long	W5630-LC5cm-60z/m	1
4	D121-437-000	22003070005	Traffic light red	L-025 red	2
5	D121-438-000	22003070006	Traffic light yellow	L-025 yellow	2
6	D121-439-000	22003070007	Traffic light green	L-025 green	2
7	D121-431-000	22002016001	Monitor frame LED light bar	DC5V RGB IC1606S	2.3
8	D121-426-000	22401000005	Horn button	White Φ 60	2
9	D121-447-000	21201032004	Monitor	LT32BN82	2
10	D121-459-000	22801000017	Speaker	20*120 8 Ω /8W	2
11	D121-420-000	21602000001	Power supply	BTX-3039(110V220V)	1
12	D121-460-000	22301000029	Coin mech.	CEC	1
13	D121-415-000	22003000075	Coin mech light	Φ 3with cover red LED	2
14	D121-450-000	23100000005	Ticket dispenser	CL-022Q-270	2
15	D121-428-000	20740803010	Button	Small Round VLT	2
16	D121-451-000	21712000001	Ticket converted board	TICK-CH.PCB	2
17	D121-412-000	22003000018	LED bulb	DC12V white 3LED	2
18	D121-425-000	29741208001	Car tail light bottom	TJXS-PGLED	2
19	D121-432-000	29711202002	Light belt	LED48NC.PCB 9 red	1

Electrical parts2.





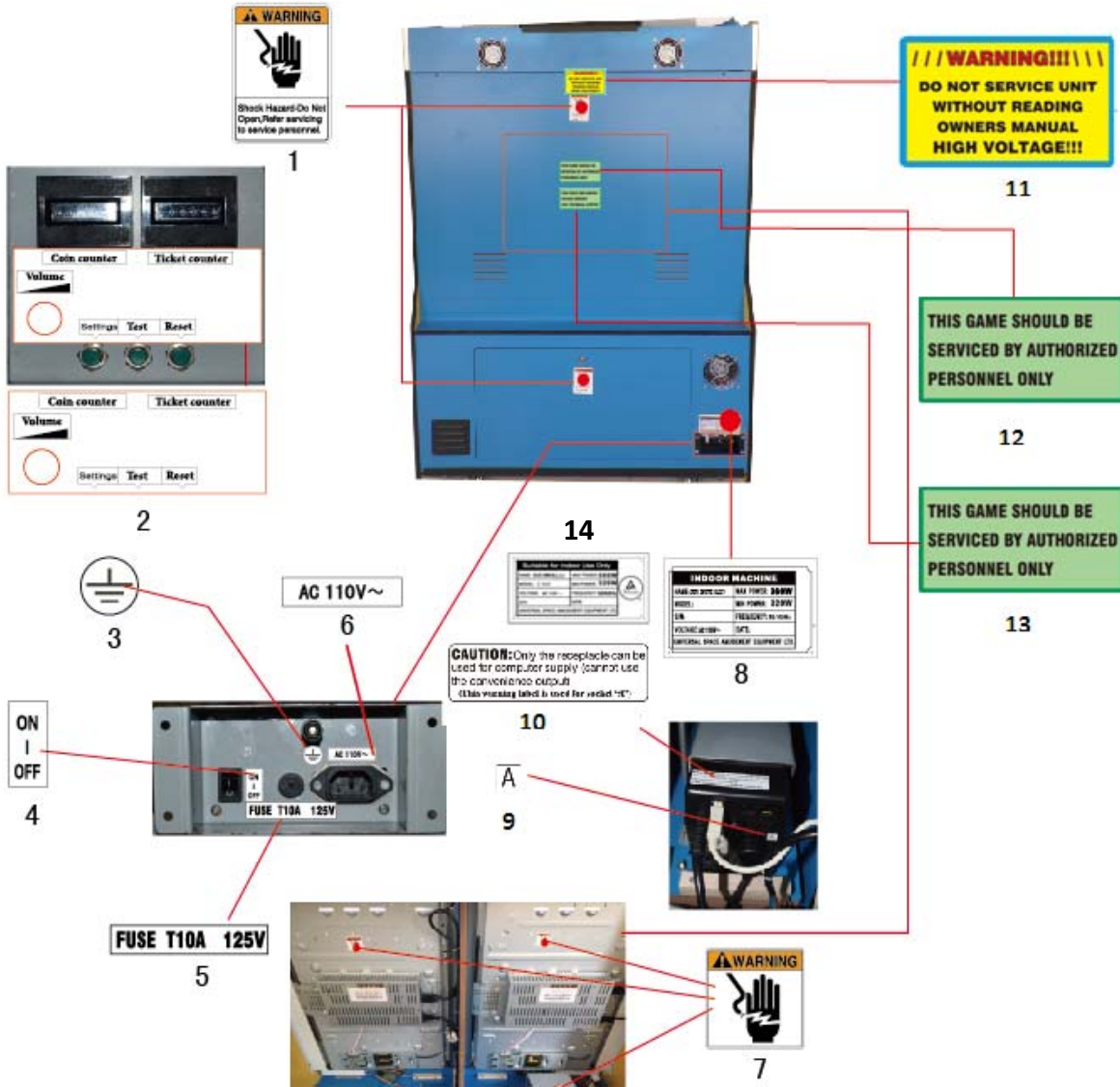
NO.	Part NO.	Code NO.	Name	SPEC.	Qty
1	D121-444-000	21101000019A	DELL PC	DLLL 3010 (small box)	1
2	D121-403-000	23301050002	Power cord	3×0.75mm 0.5m	4
3	D121-424-000	23307000006	VGA video cable	DB15M-DB15M	1
4	D121-423-000	23307020001	DVI-DVI video cable	DVI-DVI(3m)	1
5	D121-433-000	41300000004	Memory stick	4G	1
6	D121-404-000	23305000003	Audio cable	1.8M	1
7	D121-442-000	23304000019	USB data cable	A/B type 60cm	1
8	D121-421-000	23304030001	USB cable	A type 1M	1
9	D121-435-000	23309000130	Game cable set	Duo Drive	1
10	D121-427-000	21701000029	Main board	M3_MB.PCB	1
11	D121-410-000	22803000031	Amplifier	GOODCORE-25WD	1
12	D121-441-000	23000000005	Meter	C-012 DC12V	2
13	D121-405-000	21709000002	POT connected pcb	VR.PCB	1
	D121-416-000	22403000001	POT knob	Black	1
	D121-422-000	22501000030	5K POT	RVQ24YN03 25F B502	1
14	D121-408-000	22402030002	Green button	PB:11C02R (green)	1
15	D121-409-000	22402050001	Black button	PB:11C02R(black)	1
16	D121-407-000	22402010002	Red button	PB:11C02R (red)	1
17	D121-177-000	26000032000	PC power fixed bracket	Metal	1
18	D121-414-000	21107020036	Dongle	HASP HL PRO	1
19	D121-452-000	21107030033	PC graphic card	JIJIA GV-N630D5-1GI	1
20	D121-178-000	26000036000	Ticket bin	Q235	2
21	D121-184-000	26000044000	Meter bracket	δ1.5	1
22	D121-417-000	22702000010	Vent grid	4"	2
23	D121-445-000	21603000043	UPS power	I/O(110V-110V)	1
24	D121-186-000	20241317E001	UPS fixed plate	δ1.5	1
25	D121-434-000	22702000011	Vent grid	3"	4
26	D121-443-000	22702000003	Exhaust fan	3" 110V	2
27	D121-449-000	22702000020	Vent with cable	4" 110V	1
28	D121-175-000	26000014000	Shutter	δ1.5(black)	1

9.14 Decals1.



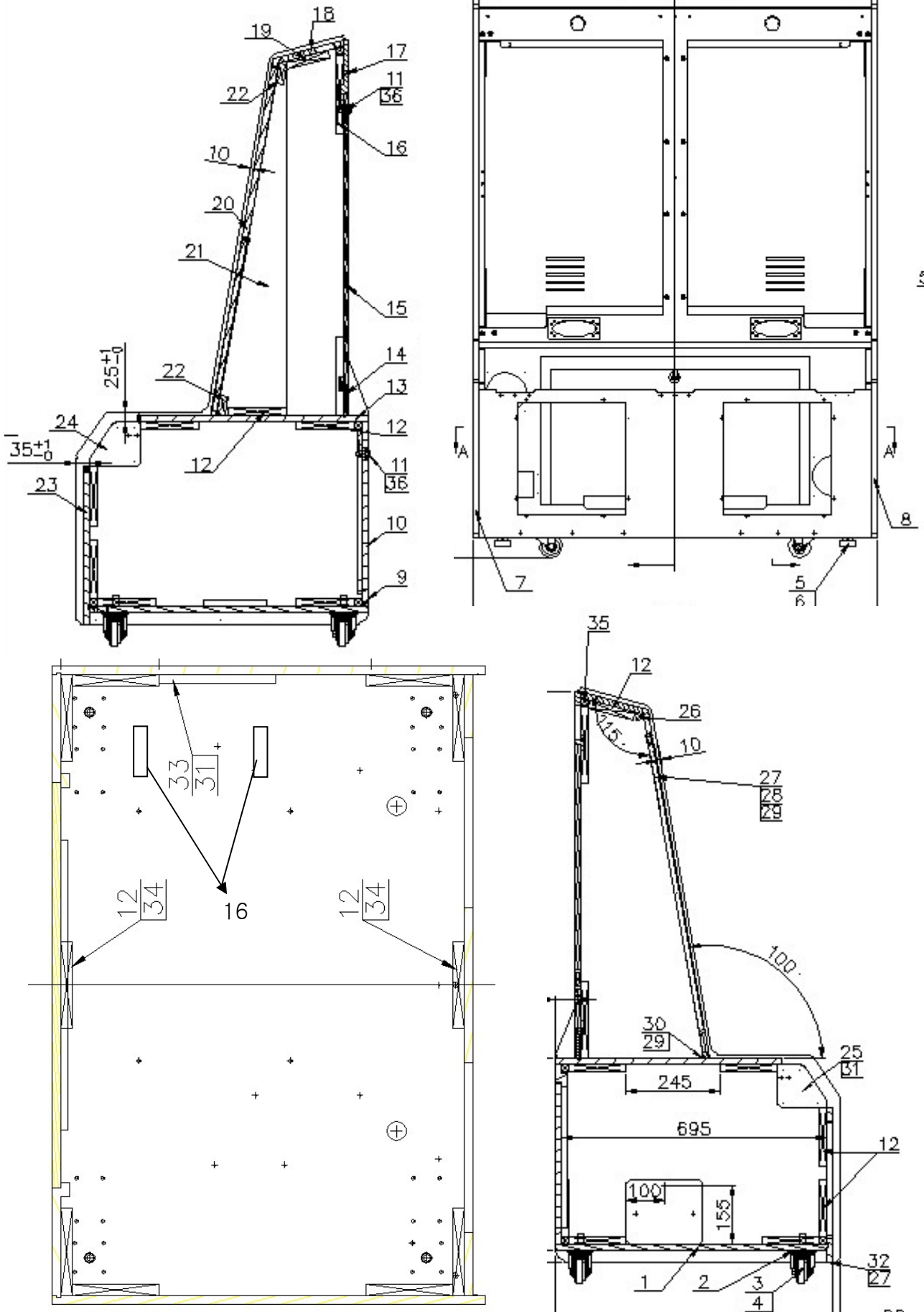
NO.	Part NO.	Code NO.	Name	Spec.	Qty
1	D121-703-000	20541317B001	Marquee decal	974×243×5	1
2	D121-702-000	20541317B002	Monitor decal	68×920×5	1
3	D121-701-000	20541317B003	Control panel decal	1093×191×3	1
4	D121-704-000	20541317B004	Left top decal	437×473×5	1
5	D121-705-000	20541317B005	Right top decal	437×473×5	1
6	D121-719-000	20541317B006	Control panel front decal	1088×251×0.3	1
7	D121-720-000	20541317B007	Left side decal	748×990×0.3	1
8	D121-721-000	20541317B008	Right side decal	748×990	1
9	D121-722-000	20541317B009	Motorbike right side decal	365×291	1
10	D121-723-000	20541317B010	Motorbike left side decal	365×291	1
11	D121-724-000	20541317B011	Car right side decal	425×393×0.3	1
12	D121-725-000	20541317B012	Car left side decal	425×393×0.3	1
13	D121-726-000	20541317B013	Car back side decal	392×486×0.3	1
14	D121-727-000	20541317B014	Motor steering wheel cap decal	65×65×0.3	1
15	D121-728-000	20541317B015	Motor tyre decal	409×247×0.3	1
16	D121-729-000	20541317B016	Motorbike panel decal	78×76×0.3	1
17	D121-708-000	25600000034	Ticket label	62×20	2
18	D121-732-000	20541317011	Right button decal	47×47	1
19	D121-731-000	20541317010	Left button decal	47×47	1

Decals2.



NO.	Part NO.	Code NO.	Name	Spec.	Qty
1	D121-710-000	25600000085	Warning label L	62×88	2
2	D121-706-000	25600000101	Meter label	88X35	1
3	D121-718-000	25600000091	GND label	12X12	1
4	D121-707-000	25600000017	Power SW label	8×18	1
5	D121-712-000	25600000083	Fuse label	33X6	1
6	D121-711-000	25600000071	110 V label	25X6	1
7	D121-709-000	25600000036	Warning label S	41×42	3
8	D121-733-000	20541317E001	110V uncertified nameplate	128×68	1
9	D121-714-000	25600000088	UPS power label	10X10	1
10	D121-713-000	25600000089	UPS warning label	70X20	1
11	D121-715-000	25600000067	Service label	100×60	1
12	D121-717-000	25600000042	Service label 1	100×50	1
13	D121-716-000	25600000043	Service label 2	100×50	1
14	D121-735-000	20541317E002	TUV nameplate	128×68	1

9.15 Wooden Part



NO.	Part NO.	Code NO.	Name	Spec.	Qty
1	D121-501-000	20341317B001	Bed wooden plate	δ15	1
2	D121-171-000	26000010000	Caster bracket	Q235	4
3	D121-180-000	25501000056	Caster	3-2689-52	4
4	D121-349-000	20104010004	Cross recessed hexagon screw kit	black	32
5	D121-170-000	26000008000	Cabinet leveller	color Zinc	4
6	D121-333-000	20102000014	Hexagon nut	M16	4
7	D121-502-000	20341317E001	Left side wooden plate	δ15	1
8	D121-503-000	20341317E002	Right side wooden plate	δ15	1
9	D121-504-000	20341317B004	Back bottom plate	δ15	1
10	D121-505-000	20341317B005	Back bottom door	δ15	1
11	D121-189-000	25300000004	Lock	C582	2
12	D121-506-000	35201001150	Wooden block	20×20	1
13	D121-507-000	20341317B006	Panel wooden plate	δ15	1
14	D121-508-000	20341317B007	Back supporting wooden plate	δ15	1
15	D121-509-000	20341317B008	Back upper door	δ15	1
16	D121-510-000	35201001200	Wooden block	20×20	6
17	D121-511-000	20341317B009	Back upper wooden plate	δ15	1
18	D121-512-000	20341317B010	Top wooden plate	δ15	1
19	D121-513-000	35201001120	Wooden block	20×20	14
20	D121-514-000	20341317B011	Monitor wooden plate	δ15	1
21	D121-515-000	20341317B012	Supporting wooden plate	δ15	1
22	D121-516-000	35201001050	Wooden block	20×20	4
23	D121-517-000	20341317B013	Front bottom wooden plate	δ15	1
24	D121-518-000	20341317B014	Left side supported wooden plate	δ15	1
25	D121-519-000	20341317B015	Right side supported wooden plate	δ15	1
26	D121-520-000	20341317B016	Bevel angle block	20×20	4
27	D121-125-000	20241317B005	Video side fixed plate	δ1.5	2
28	D121-327-000	20101100036	Cross recessed pan head screw suite	M4×16	10
29	D121-345-000	20103000018	Cross recessed pan head self-tapping screw	ST4.2×12 GB845-85	22
30	D121-126-000	20241317B006	Video bottom fixed plate	δ1.5	4
31	D121-347-000	20103020023	Cross recessed sunk head self-tapping screw	ST4.2×25	12
32	D121-127-000	20241317B007	Bottom reinforced plate	δ2 black	1
33	D121-521-000	20341317B017	UPS wooden plate	δ15	1
34	D121-343-000	20103000003	Cross recessed sunk head self-tapping screw	ST4.2×30	232
35	D121-522-000	20341317B022	Bevel angle block	20×20	3
36	D121-187-000	20241317E002	Lock pin	white Zinc	2
37	D121-527-000	35204101	plywood	4×8	1.5
38	D121-528-000	3520219601	MDF	Blue	2
39	D121-529-000	35201001	Wooden block	20×20	8

